

Please contact our Human Resources Department at 360.478.2366 for more information. Or to obtain an application please mail your inquiry to:

Attn: Human Resources
Peninsula Community Health Services
P.O. Box 960
Bremerton, WA 98337

Please provide the following information:

- Yes, I am interested in volunteering. Please send me an application.
- No, thank you, but I am aware of others who might be interested in volunteering. *(see below)*
- I may be interested. Could you please provide me with more information about your organization?

Name

Address

Phone

Email

Please list any individuals you know who may be interested in volunteering *(optional)*.

Name:

Phone:

About the organization:

Peninsula Community Health Services is a 501C(3) non-profit, health center that was founded in 1989. The mission of PCHS is to provide accessible, affordable, compassionate, quality health care services for all people in its communities.

PCHS has three clinics in Kitsap County with sites in Bremerton, Port Orchard, and Poulsbo.

For more information on PCHS visit our Web site at:

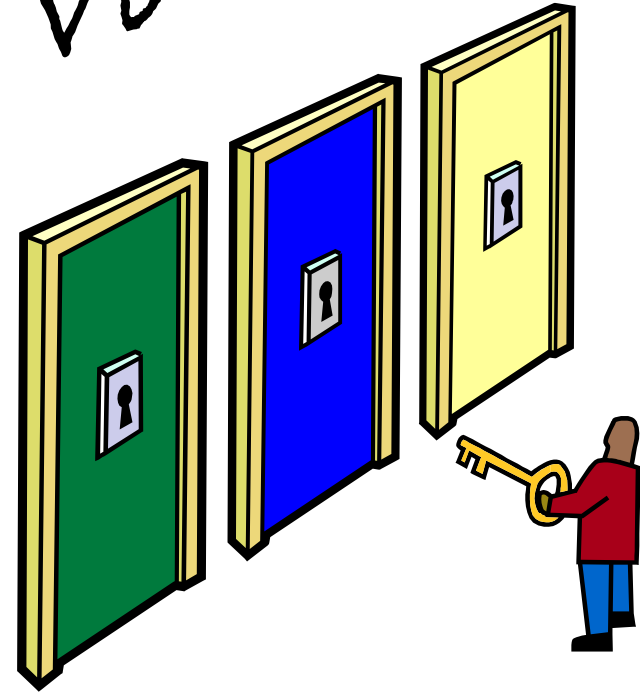
www.pchsw eb.org

Revised: March 2007



Providing accessible, affordable, compassionate, quality health care services for our communities.

volunteer



and unlock your potential!

Peninsula Community
Health Services

Our volunteers make all the difference!

Volunteering at Peninsula Community Health Services

Volunteering with Peninsula Community Health Services allows you the freedom to donate your time and skills in various areas of the health care industry.

Volunteers also have the opportunity to participate in numerous educational and community outreach events such as health fairs and fundraisers.

Why volunteer?

Volunteer experience looks great on resumes and the training you receive can be useful in any job.

Plus, many individuals find volunteer work fulfilling because they know they are helping a worthwhile organization. In addition, volunteering with PCHS can help you:

- * explore possible career options
- * find and utilize your personal skills and talents
- * develop new friendships
- * network with professionals

“ I honestly feel like my volunteer work at PCHS makes a difference... ”

— Linda Roehmholdt
Volunteer

Where you can volunteer

We are a multi-site health center with medical, dental and administrative sites in Kitsap County.

We're located at:

- * PCHS Bremerton:
616 Sixth St. (Medical, Pharmacy & Dental opportunities)
- * PCHS Port Orchard:
320 South Kitsap Blvd. (Medical, Pharmacy & Administrative opportunities)
- * PCHS Poulsbo: 19045 Hwy 305, Plaza 305 #180 (Medical opportunities)
- * PCHS Administration: 400 Warren Ave., Suite 300, Bremerton (Administrative opportunities)

Areas of potential service include

Medical: Provide assistance to the medical staff at one of our three clinics by becoming an office assistant. Help pull and file charts with the medical records team. Or, use your previous medical experience to become one of our volunteer providers.

Dental: Assist our dental offices in making appointments and pulling charts.

Pharmacy: Count and stock medications, answer phones, assist customers, discard outdated meds.

Administration: You can assist the Human Resources or Billing staff by providing office support or spend some time as a volunteer receptionist greeting guests and answering phones.

Other opportunities include helping our Facilities staff with special painting and fabrication projects. Or provide assistance to our Development team by helping with fundraisers and special events.

Peninsula Community Health Services understands the critical role volunteers play in supporting its mission. It fosters an educational and embracing environment for all volunteers. Additionally, you will often times be invited to special volunteer activities created to praise the work that you do for the organization.

“ I feel welcomed here at PCHS. I am getting a wonderful opportunity... ”

— Crystal Belle
Volunteer